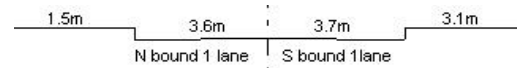
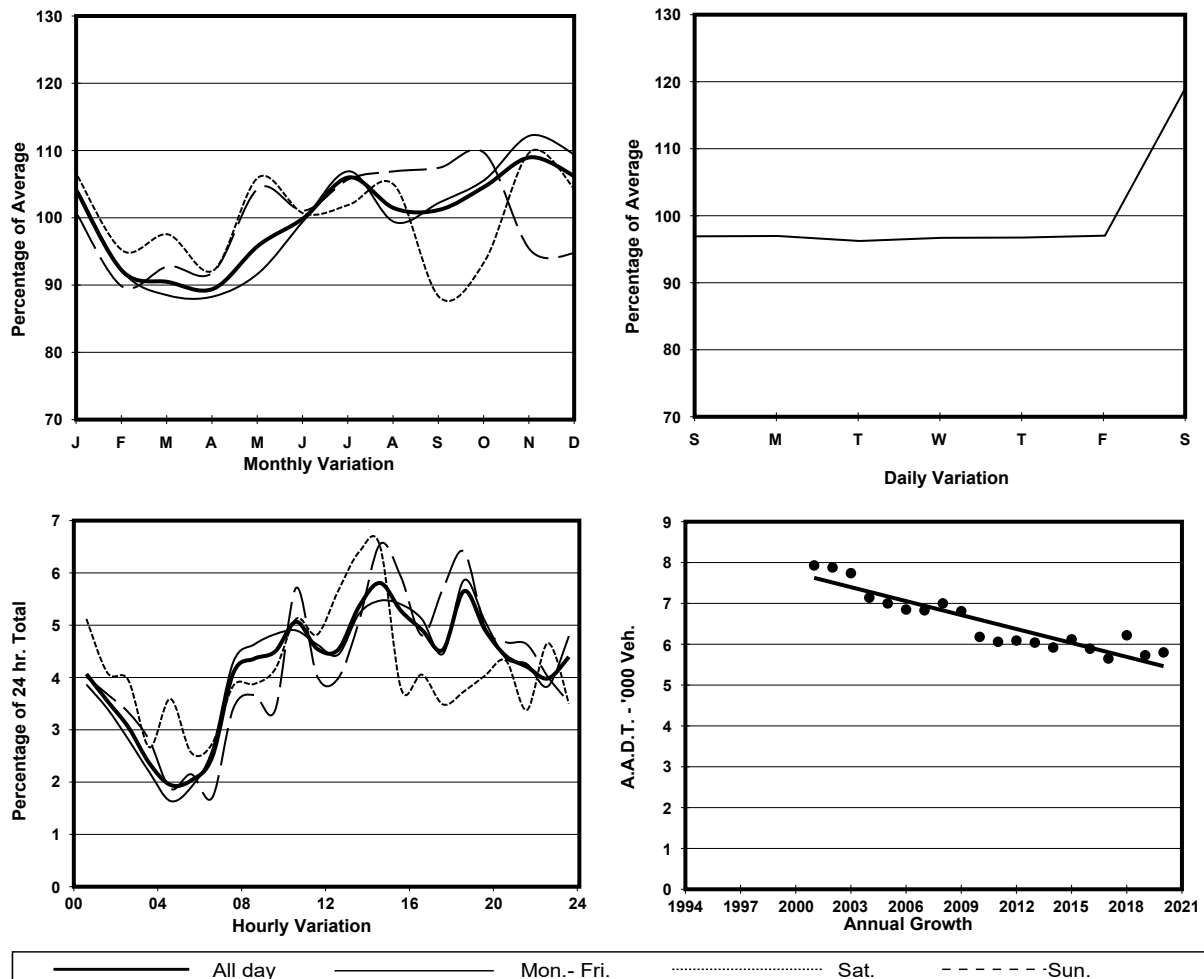


YEAR 2020
CORE STATION 5102
ROAD NETWORK MINOR
ROAD TYPE LOCAL DISTRIBUTOR

LINK TSENG CHOI ST (from CASTLE PEAK RD NORTHERN JUNCTION to CASTLE PEAK RD SOUTHERN JUNCTION)



1. TRAFFIC FLOW VARIATION AND GROWTH



2. TRAFFIC CHARACTERISTICS (BY DIRECTION)

Parameter	All - Day	Mon. - Fri.	Sat.	Sun.
SOUTH BOUND				
A.A.D.T.	3630	3520	4500	3390
R 12 / 24 - %	58.2	59	57.5	54.5
R 16 / 24 - %	75.8	76.9	75.8	69.7
AM Peak Hour	0700-0800	0700-0800	0700-0800	0900-1000
One-way flow at AM peak hour	170	180	170	150
T - % (AM)	-	-	-	-
PM Peak Hour	1800-1900	1800-1900	1800-1900	1800-1900
One-way flow at PM peak hour	220	220	310	130
T - % (PM)	-	-	-	-
Prop.of commercial vehicles - 16 hr.	-	-	-	-
NORTH BOUND				
A.A.D.T.	2170	2100	2480	2240
R 12 / 24 - %	59.4	59.7	60.6	56.7
R 16 / 24 - %	76.8	76.7	79	74.9
AM Peak Hour	0900-1000	0900-1000	0800-0900	0800-0900
One-way flow at AM peak hour	110	120	120	100
T - % (AM)	-	-	-	-
PM Peak Hour	1800-1900	1800-1900	1700-1800	1600-1700
One-way flow at PM peak hour	110	110	150	130
T - % (PM)	-	-	-	-
Prop.of commercial vehicles - 16 hr.	-	-	-	-

3. OTHER INFORMATION AND COMMENT